



BMV Veterinary Systems  
**PRODUCT CATALOG**



[www.bmv-vet.com](http://www.bmv-vet.com)



Download and intall APP



Academic and Clinical Research



China Agricultural University



South China Agricultural University

**BMV Technology Co., Ltd**

Office Add: Flat A, 5/F., Unionway Commercial Centre, 283 Queen's Road Central, Hong Kong  
 Factory Add: BMV of Yinjin Building, Baoan Centre District, Shenzhen 518010, China

Tel: +86 (0755) 85275443 Fax: +86 (0755) 26564580  
 Email: [export03@bmv.cc](mailto:export03@bmv.cc) whatsapp/wechat: +86 186 6495 5609  
 Website: [www.bmv.cc](http://www.bmv.cc) or [www.bmv-vet.com](http://www.bmv-vet.com)



Leading brand  
in the Animal Imaging industry of China.

Set R&D, production, sales in one of the medical equipment manufacturers, service providers

#### Fast Facts:

- ▶ BMV is a 2200 sq.m. manufacturing, testing and distribution facility with a 168 acre research farm.
- ▶ As a CFDA-registered facility, we produce private label medical systems.
- ▶ Registered capital 30 Million RMB
- ▶ Total Employees: 85

#### Expertise:

- ▶ Manufacturing
- ▶ Quality Systems
- ▶ Product and Process Development
- ▶ Logistics



## PRODUCT LIST

#### New Product

BPU60 Vet / S10 / MX5 Plus Vet / ImageVue

#### Equine/Small Animal/Zoo and Marine Mammal

BPU90 Vet / BPU60 Vet / PT50C Vet / BCU70 Vet / PT50A Vet /  
BPU50B Vet / BPU50A Vet / BPU50D Vet / BPU50C Vet

#### Veterinary Anesthesia & Monitor Machine

A9 / A7 / BMO210 Vet / BES307 Vet / BMO100B Vet / BMO100C  
Vet / DBP-8 / BMO208A / BVP-50 Vet / BSP-50 Vet / BMV  
Dental Unit Machine / BLT-01

#### Clinical & Laboratory

BCL-300 Vet / BCL-105 Vet / BCL-120 Vet / BCL-200 Vet / Rapid  
Test Kit

#### Ruminant & Farm Equipment

S6 / PT50C Vet / PT60 Vet / S10 / S9 / S8 / S6 / S6 Lite / S5 / S3 /  
S4 / S1 ai / S2 / S1(BF-8) / S1 em / L60RL / L60RC / S1sa / L70 /  
M50

#### Accessories

IFR™ Probe Introducer / Robust IPX5 waterproof carrying case /  
Probe for Animal Science, Backfat, Muscle Scoring / I-Scan®  
Ultrasound Goggles / System sunshade and protective jacket /  
Ultrasound probe holder

### CORPORATE PROFILE

BMV is a professional high-tech company combining R&D, manufacture and distribution of specialty medical devices across medical and veterinary fields since 2008. We offers a line of veterinary specific medical devices under the BMV brand that are recognized globally for their contributions in enhancing animal medicine. These devices are used in veterinary clinics, universities, and specialty areas such as zoos and aquatic centers and livestock farm around the world.

# BPU60 Vet

## Mobility

## Innovative Design

- ▶ Light Weight(7.5kg)
- ▶ 15" High Resolution LED(rotatable 0°~45°)
- ▶ Built-in Battery(120 minutes) for off-site, emergency care
- ▶ Dual active probe connectors
- ▶ Built-in probe holders
- ▶ Rich Peripherals Ports (LAN,VGA,HDMI,USB,Video,Remote)
- ▶ Ergonomic Trolley(Accessory box, printer&probe holders)



## Confidence for Diagnosis

Full High-tech Probes Family, Comprehensive Vet Clinical Applications  
Clear imaging quality with more than 12 different professional transducers



New PRODUCT

## Advanced Technologies

- ▶ Digital front-end technology
- ▶ Multi-beam processing technology
- ▶ Tissue harmonic imaging
- ▶ Invert harmonic imaging
- ▶ Speckle noise reduction technology
- ▶ Spatial compounding imaging
- ▶ High precision dynamic focus imaging
- ▶ iBscan™ quick image optimization technology

## EMPOWERING

all your clinical needs

## BPU60 Vet



The BPU60 Vet provides all the power you need for today's challenging veterinary clinical environment, yet remain ultra-portable, ultra-affordable. With its cutting-edge imaging technologies, comprehensive functions, precise and intuitive workflow, ergonomic and eco-friendly design, versatile transducers for different diagnosis of Abdomen, Obstetrics, Cardiology, Small parts, Vascular, Tendon, etc. , we firmly believe the BPU60 to be the very best portable Equine, Farm & Small Animals ultrasound in its class today.

New PRODUCT



# BestScan® S10

Intelligence  
Empowers More



Fast connection and conversion



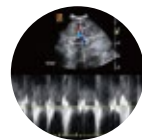
Compact dustproof and waterproof design



Intelligent HD imaging



Long continuous working time



Rich measurement software packages



Plenty of accessories options

**New** PRODUCT

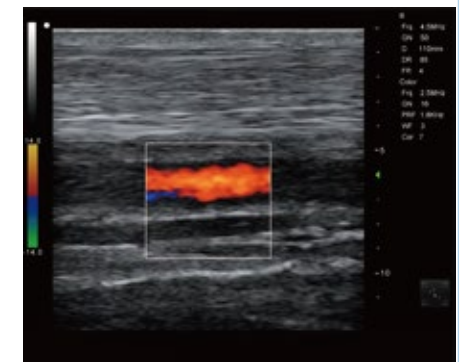
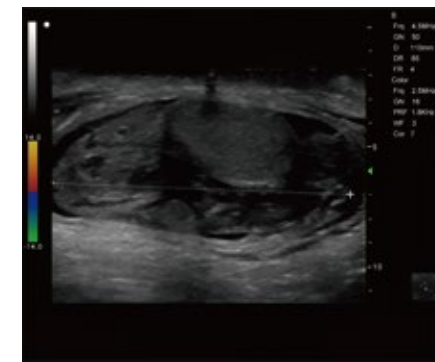
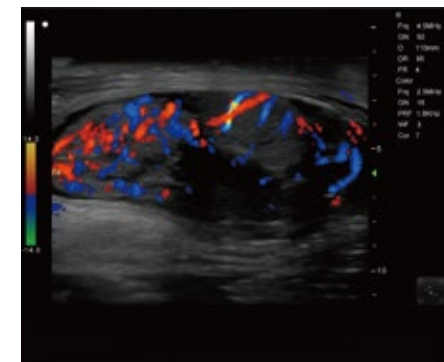
# S10

BestScan® Wireless Color Doppler  
Equine, Small & Farm Animals

- ▶ 4K resolution, and best-in-class processing
- ▶ Unmatched B&THI, M and colors Doppler (color Doppler, Power, PW mode) imaging
- ▶ Unbelievable experiences thanks to exceptional performance
- ▶ Modular, Maintenance-free, future-proof platform
- ▶ Power to go, 14 hours working time, wireless charging
- ▶ Broad-bandwidth phased/linear/curved/rectal array transducer
- ▶ Special patented BMV's veterinary software



BestScan® S10 is wireless color Doppler ultrasound system with the exciting breakthrough in technology such as AI for better images, wireless freedom, works on popular smart device, specifically engineered for all aspects of bovine, equine, pig, sheep and goats reproductive imaging, as well as for equine tendon imaging.



Full High-tech Probes Family, Comprehensive Vet Clinical Applications  
Clear imaging quality with more than 12 different professional transducers



**New** PRODUCT

# MX5 Plus Vet

Color Doppler system

- ▶ Image mode: B, D, C, M
- ▶ Pre-registered Android, Windows Software
- ▶ Main-board
- ▶ 15-2 Mhz, 128 elements, Scan depth: 1-28cm;
- ▶ Ibclear: Smooth Uniform Tissues;
- ▶ S-crystal technology: broadband frequency response and higher sensitivity
- ▶ USB-C transducer with replaceable cable



## C5-2

5-2 Mhz Curved

Application:  
abdominal, musculoskeletal,  
nerve, ob, gyn

Radius: 60 mm, Element: 128  
Scan depth: 6-24cm



## L10-5S

14-6 Mhz Linear

Application:  
lung, musculoskeletal, nerve, ophthalmic,  
small parts, arterial, venous

Length: 25 mm, Element: 128  
Scan depth: 2-7cm

## L10-5

10-5 Mhz Linear

Application:  
lung, nerve, small parts, arterial,  
venous

Length: 38mm, Element: 128  
Scan depth: 2-7cm



## C7-3

7-3 Mhz Curved

Application:  
abdominal, neonatal, nerve, venous,  
arterial, cardiology (vet)

Radius: 20 mm, Element: 128  
Scan depth: 2-10cm



## L8-4

8-4 Mhz Rectal Linear

Application:  
musculoskeletal, ob, arterial

Length: 64 mm, Element: 64  
Scan depth: 2-10cm



- Black/White system  
MX5 Go version available.
- 80 elements B/W system  
version available.
- iBClear™ Technology.

**New** PRODUCT

# ImageVue

Vet Digital Imaging System

- ▶ 100mA high frequency and presentation of veterinary software in a compact design
- ▶ Maximum output power of 5.6kW and high voltage generator to meet different needs
- ▶ High capacity lithium battery for long standby and multiple exposure modes
- ▶ Real-time battery level indicator
- ▶ Touchscreen user and APR
- ▶ Integrated Film Focus Distance Measurement (SID Ruler)
- ▶ Powerful and effective LED collimator light
- ▶ Lightweight and compact design
- ▶ Shooting with remote control
- ▶ Multiple protection and automatic error message notification
- ▶ Special transport box for safe transport and travel



**New** PRODUCT



**BMV X-Ray Unit**  
PORTABLE  
HIGH FREQUENCY  
100 MA X-RAY DEVICE

Light  
Small  
With Veterinary Software

## BPU90 Vet

Doppler ultrasound scanner

- ▶ Sleek and lightweight console with a small footprint
- ▶ Wide-angle 15" high resolution LED with articulated arm for easy viewing and safe system movement;
- ▶ MicroFine™ Focusing technology
- ▶ Patented fusion signal progressing technique
- ▶ Tissue Harmonic Imaging
- ▶ QuickScan optimized function
- ▶ Adaptive color and adaptive Doppler
- ▶ Preset clinical applications
- ▶ Fully DICOM 3.0 connectivity improves imaging data management
- ▶ Optimum imaging quality in the same grade



## BPU60 Vet

Ultra-portable Color Doppler Ultrasound System

- ▶ New "Pure imaging diagnosis" platform
- ▶ Excellent for cardiac, vascular, obstetrical and abdominal imaging etc
- ▶ Support high and low frequency phased array probe
- ▶ QuickScan optimized function
- ▶ Special patented BMV's veterinary software
- ▶ Breakthrough ergonomics
- ▶ 15" Sharp brand LED monitor
- ▶ 0~45° tilting to view it freely and comfortably
- ▶ Two transducer socket, up to 12 types probe meet all of veterinary applications
- ▶ Rich Peripherals Ports: (VGA, HDMI, 2 USB, S-Video, ethernet), DICOM
- ▶ Optimum imaging quality in the same grade



Equine/Small Animal/Zoo and Marine Mammal

PRODUCT LINE

## PT50C Vet

Full Touch Color Doppler Ultrasound System

- ▶ Price/ Performance
- ▶ Excellent for cardiac, vascular & abdominal imaging etc
- ▶ Latest design, 15" full Touch screen, the most lightweight touch ultrasound with 3 active probe connectors
- ▶ High definition large touch screen, adjustable viewing angle
- ▶ High resolution images, Multi- wideband frequency conversion transducers
- ▶ Simply software work flow, Auto Image Optimized, Improve work efficiency
- ▶ Wi-Fi Available, DICOM 3.0
- ▶ Long-lasting Battery is pluggable and can Continuous working 2h
- ▶ Rich and Professional calculation software
- ▶ Professional Veterinary probe, Animal body mark, Annotation and measurement software

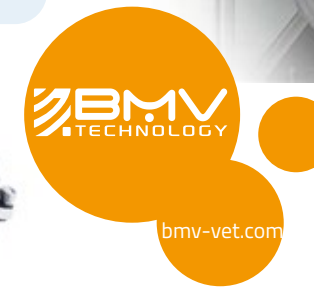


## BCU70 Vet

Portable Veterinary Ultrasound

Compact veterinary color doppler system with professional measurement, calculation packages and specialized veterinary exam modes, bodymarks, and high density transducers for veterinary application. These enable veterinarians to diagnose in anytime and anywhere with great confidence.

- ▶ Highly intuitive layout.
- ▶ Adaptive Image Micro-environment Enhancement (AIME).
- ▶ Tissue Harmonic Imaging (THI).
- ▶ Tissue Specific Imaging (TSI).
- ▶ 15" LCD monitor with over 150° viewing angle.
- ▶ Backlit control keys and Qwerty keyboard.
- ▶ Low fan noise and heat.
- ▶ 4 wheels swivel multi-functional trolley cart.
- ▶ 3 probe connectors (with expanding transducers connectors).
- ▶ 4 USB ports.
- ▶ Extended interface.
- ▶ DICOM 3.0.



## PT50A Vet

Full Digital B/W Ultrasound System

- ▶ Price/ Performance
- ▶ Preset clinical applications
- ▶ Wide-angle 15" high resolution touch LED
- ▶ Quick saving of images for storage and archiving
- ▶ Tissue Harmonic Imaging
- ▶ Up to 3 hours continuous work
- ▶ Three transducer connector, 1024 digital channel



Equine/Small Animal/Zoo and Marine Mammal

PRODUCT LINE

## BPU50B Vet

Laptop Color Doppler Ultrasound System

- ▶ Price/ Performance
- ▶ Excellent for cardiac,vascular& abdominal imaging etc
- ▶ Image mode :B+Color, B+PDI, B+PW, B+Color+PW, B+PDI+PW,
- ▶ B/BC Dual Real-TimeTHI, Invert harmonic imaging
- ▶ Professional veterinary probe, animal body mark, annotation and measurement software Built-in rechargeable lithium battery, unlimited language support



## BPU50A Vet

Laptop B/W Ultrasound System

- ▶ 15" LED monitor
- ▶ Full silicon keyboard with backlight
- ▶ Light Weight,only 3.5kgs,easy to carry
- ▶ Two transducer connector,1024 digital channel
- ▶ Tissue Harmonic Imaging
- ▶ Up to 3 hours continuous work

## BPU50D Vet

4D Laptop Color Doppler Ultrasound System

- ▶ Powerful function & Configuration
- ▶ Large screen display
- ▶ Built-in lithium battery
- ▶ Small size, light weight, easy to carry, N.W. d" 5kg
- ▶ Equipped with a wide range of probes for abdominal, obstetric, vascular, cardiac, small organ, urinary applications
- ▶ Built-in 4D module with optional 4D volume probe
- ▶ A variety of digital peripheral interfaces, provides a variety of image output methods
- ▶ PC platform, easy to operate, meet various software upgrades



## BPU50C Vet

3D Laptop Color Doppler Ultrasound System

- ▶ Powerful function & Configuration
- ▶ Large screen display
- ▶ Built-in lithium battery
- ▶ Small size, light weight, easy to carry, N.W. d" 5kg
- ▶ Equipped with a wide range of probes for abdominal, obstetric, vascular, cardiac, small organ, urinary applications
- ▶ Built-in 4D module with optional 4D volume probe
- ▶ A variety of digital peripheral interfaces, provides a variety of image output methods
- ▶ PC platform, easy to operate, meet various software upgrades

- ▶ Rich clinical application function
- ▶ B+CF (Dual Images), B+CF/PDI/DPDI+PW (Triplex)
- ▶ Convex extended imaging technology
- ▶ Linear array deflection/Trapezoidal imaging technology
- ▶ Spatial compound Imaging technology
- ▶ Panoramic imaging technology (optional)
- ▶ 3D/4D imaging technology (optional)
- ▶ Speckle noise removal technology
- ▶ Pulse inversion tissue harmonic imaging technology (iTHI)

Equine/Small Animal/Zoo and Marine Mammal

PRODUCT LINE

## A9

General Veterinary Anesthesia Machine

- ▶ Double evaporator meets various anesthesia needs, flexible anesthesia scheme and high anesthesia quality
- ▶ Innovative Non-return parallel control structure avoid drug stringing
- ▶ Easy Fill dosing method, accurate and no leakage
- ▶ Supports reuse of old cans, saving costs
- ▶ APL fast blocking button, easily respond to intraoperative emergency
- ▶ Filter tank efficiently absorbs anesthesia waste gas, zero pollution of anesthesia waste gas



## BMO210 Vet

Veterinary animal monitor

- ▶ 12" color TFT LCD screen with multi channel waveforms display
- ▶ Rechargeable high energy built in Li Battery
- ▶ Easy to learn and use, simplified menus and delicated functions keys
- ▶ Easy connecting with central monitoring system
- ▶ 96 hours data storage
- ▶ Monitors end-tidal CO2 and inspired CO2 accuracy at high respiration rates
- ▶ Gas monitoring with cutting edge water filter tube



## A7

General Veterinary Anesthesia Machine

- ▶ The evaporator is fully inspected from the factory to ensure that each one is accurate
- ▶ Track-type CO2 absorber
- ▶ APL valve is closed with one key, two circuits are switched with one key, evaporator is disassembled with one key, intelligent weighing is opened with one key
- ▶ Intelligent exhaust gas recovery, intelligent alarm of weighing machine, avoid overload of filter tank
- ▶ Humanized design, block head in breathing circuit, lockable caster, monitor mounting frame
- ▶ Save space, compact design, integrated installation of monitors, ventilator, E-type oxygen cylinder, oxygen generator and other supporting equipment



## BES307 Vet

The inexpensive entry-level Touch ECG

- ▶ 12 leads simultaneous acquisition electrocardiograph;
- ▶ 3 channels printout on 80mm wide thermal paper;
- ▶ Works in manual or automatic mode with the possibility to have a hard copy of the last recording;
- ▶ Color LCD and Touch-screen;
- ▶ High resolution thermal printer;
- ▶ Hard copy 3 channels real time;
- ▶ Memory 60 seconds for each lead;
- ▶ Digital filters for elimination of muscles tremors, power line and base line disturbs and baseline wandering;



Veterinary Anesthesia & Monitor Machine

PRODUCT LINE

## BMO100B Vet

### Veterinary Handheld Vital Signs Monitor



- ▶ 3.5" high resolution color touchscreen.
- ▶ Wearable detection technology to measure both respiratory rate and respiratory waveform.
- ▶ Support for adding mainstream or sidestream ETCO2 module.
- ▶ Two types of power supply: AC charge or Lithium-Ion Battery.
- ▶ Three measurement modes: spot-check, record and monitoring.
- ▶ Continuous storage of data for 999 patient files in 120 hours.
- ▶ Data can be stored on a computer and managed, analyzed and printed with data analysis system.
- ▶ Quick, reliable and accurate readings on SpO2 and Pulse rate.
- ▶ Data storage for up to 999 different animals.
- ▶ Expanded heart rate values and veterinary specific SpO2 sensors to accommodate a variety of species.

## BMO100C Vet

### Veterinary Monitor



- ▶ Three in One: veterinary BP technology, pulse oximetry and temperature.
- ▶ Simple to use: Intuitive, color, touch screen interface.
- ▶ Accurate: BP algorithm was specifically developed for companion animals by experts at a leading vet school.
- ▶ Continuous Monitoring: Monitoring during procedures is simple with user-defined intervals for BP measurement.
- ▶ Portable: Battery-operated device easily moved to different monitoring locations.
- ▶ Rechargeable: Battery recharged when device is plugged into AC power, reducing disposable battery waste.
- ▶ Data transfer to IPAD, PC

## DBP-8

### Doppler blood pressure diagnosis system



- ▶ Aneroid Sphygmomanometer, no pollution
- ▶ Integrated sphygmomanometer, easy to operate
- ▶ Specialized probe with high sensitivity
- ▶ Abundant vascular doppler menu
- ▶ Multiple size cuff, feasible to different animals
- ▶ Display vascular sound volume and parameter
- ▶ Turn off when no using
- ▶ Both of battery and AC power supply

## BMO208A

### Veterinary Vital Signs Monitor



- ▶ 7.1" coloured and bright LCD screen;
- ▶ Parameters: SpO2, ECG, Heart Rate, NIBP, TEMP\*2, RESP, ETCO2-sidestream;
- ▶ Suitable for cat, dog, horse patients ;
- ▶ 72 hours graphic and tabular trends of all parameters;
- ▶ 32 seconds full-disclosure waveform review
- ▶ 500 NIBP and SpO2 measurement data can be stored and recalled;
- ▶ 3-level audible and visual alarms and alarm events can be stored and reviewed.
- ▶ 100M Base-T Ethernet Interface, Support to connect to IPMS8000
- ▶ Patient Management System;
- ▶ Special designed SpO2 technology with adjustable emitting light and a wide range measurement for veterinary
- ▶ Special designed ECG technology with high input impedance to suit for different size of veterinaries
- ▶ Special designed NIBP technology with different size of NIBP cuffs for veterinaries
- ▶ Sidestream technology accommodates intubated and non-intubated animals
- ▶ Unique Designed LOGO for veterinary use only
- ▶ Ergonomically designed handle to fit your hand comfortably
- ▶ Can link with IPMS8000 intelligent patient monitor system
- ▶ Multi-language: English, Chinese, French, Spanish, Germany

BMO208A veterinary vital sign monitors come in 4 flavors to suit your needs and healthcare departments:

Vital Signs Monitor with ECG RESP SpO2 NIBP TEMP PR

Vital Signs Monitor with ECG RESP SpO2 NIBP TEMP PR Mainstream ETCO2

Vital Signs Monitor with ECG RESP SpO2 NIBP TEMP PR Sidestream ETCO2



**BMV**  
TECHNOLOGY

bmv-vet.com

### Veterinary Anesthesia & Monitor Machine

PRODUCT LINE

## BVP-50 Vet

### Veterinary infusion pump



- ▶ Users any standard IV sets and stores up to 20 editable brands 4.3 inch color touch screen, parameter setting and editing directly
- ▶ Multi-function operation with 4 infusion modes: rate mode, time body, body-weight mode and drip mode.
- ▶ Micro Mode - friendly design for small pets.
- ▶ Flow rates range from 0.1ml/h to 1500ml/h with increment of 0.01ml/h
- ▶ Double CPU for increased safety, Ultrasonic air-in-line detector
- ▶ IrDA, WIFI, Nurse Call, RS232, data export etc.
- ▶ Historic record more than 5000 entries
- ▶ Standard: 4.5 hours; Optional: 9 hours (@25ml/h)
- ▶ IP34 Waterproof, handle included and inter-lockable design.



## BSP-50 Vet

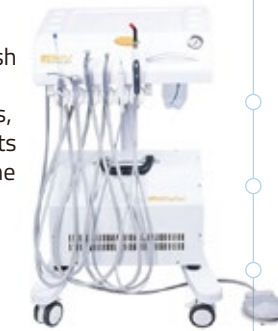
### Veterinary syringe pump



- ▶ Automatic recognition of syringe sizes (5,10,20,30 and 50/60), syringe brand name editable
- ▶ 4.3 inch color touch screen, parameter setting and editing directly
- ▶ Multi-function operation with 3 infusion modes: rate mode, time body, and body-weight mode
- ▶ Micro Mode - friendly design for small pets.
- ▶ Flow rates range from 0.1ml/h to 1500ml/h with increment of 0.01ml/h
- ▶ Double CPU for increased safety, More than 15 types dose rate unit
- ▶ IrDA, WIFI, Nurse Call, RS232, data export etc.
- ▶ Historic record more than 5000 entries
- ▶ Standard: 6 hours; Optional:12 hours (@5ml/h)
- ▶ IP34 Waterproof, handle included and stackable design.

## BMV Dental Unit Machine

### Veterinary Monitor



BMV Dental is a dental unit that offers stylish design, mobility and ease of use. Thanks to the professional medical wheels with brakes, the transportation of the unit is very quiet. Its light weight provides easy carrying within the clinic. It can be used with an external air supply system or optional dental air compressor.

- ▶ 1 Set Dental Air Compressor (Silent, oil-free, 600W, stainless steel tank with cabinet, handle for convenient carrying)
- ▶ 1 Piece Saliva Absorber
- ▶ 1 Set 3 Way Syringe
- ▶ 2 High and Low speed Handpiece tubing (2-4 holes)
- ▶ 1 Piece LED Curing Light
- ▶ 1 Set of Ultrasonic Cavitron (5 pcs of removable tips are free of charge)
- ▶ 1 Set Clean Water Supply System
- ▶ 1 Set Drainage System
- ▶ Foot Pedal and Mobile System

## BLT-01

### Veterinary laser therapy machine



- ▶ Built-in lithium battery 5200mAh
- ▶ Laser wave length 808nm and 650nm
- ▶ Terminal laser output: 5X808nm laser beams and 10X650nm laser beams
- ▶ Case material: ABS; Lens material: Tempered glass
- ▶ Maximum power: 800mW
- ▶ Working mode: Pulse mode and continuous mode
- ▶ Using time: 2 hours
- ▶ Power adjustment: 6 grades for adjustment

**BMV**  
TECHNOLOGY

bmv-vet.com

### Veterinary Anesthesia & Monitor Machine

PRODUCT LINE



## BCL-300 Vet

VET Hematology Analyzer

- ▶ **21 Parameters:** WBC, LYM#, MID#, GR#, LYM%, MID%, GR%, RBC, HGB, HCT, MCV, MCH, MCHC, RDW-CV, RDW-SD, PLT, MPV, PDW, PCT.
- ▶ P-LCC, P-LCR
- ▶ **3 Histograms:** WBC, RBC, PLT
- ▶ **Species:** 12 pre-set species including Canine, Feline, Equine, Bovine, Murine, Swine, Leporid 4 optional species
- ▶ **Sample Volume:** Whole blood, 10 µl
- ▶ **Storage Capacity:** Auto-save, more than 200,000 analysis results available
- ▶ **Throughput:** 60 tests / hour
- ▶ **Data Search Mode:** By Sample ID, Patient ID, Date, Multi-keywords.
- ▶ Loading/extracting data, offline reading
- ▶ **Display:** 10.4 inch colorful touch screen
- ▶ **Operation Mode:** Touch screen, Keyboard/mouse
- ▶ **Quality Control:** L-J, X-R, X-B, etc
- ▶ **Printout:** Thermal printer (defaulted), available for external printers.
- ▶ Optional printing templates and format
- ▶ **Data Communication:** LIS, HL7
- ▶ **Wireless Connection:** Wifi, Bluetooth
- ▶ **Ports:** LAN x 1, RS232 x 1, HDMI x 1, USB Port x 4
- ▶ **Languages:** English, Chinese
- ▶ **Optional Accessories:** Handheld Barcode Scanner



bm-vet.com



The State Scientific and Technological Progress Award  
National Standards Maker of Hematology Analyzers and Reagents  
National Hematology Analyzers and Reagents Example Manufacturing Park  
Excellent Domestic Manufacturer Award by National Health Commission



## BCL-120 Vet

Veterinary Point-Of-Care Chemistry Analyzer

- ▶ Three in One: veterinary BP technology, pulse oximetry and temperature.
- ▶ Simple to use: Intuitive, color, touch screen interface.
- ▶ Accurate: BP algorithm was specifically developed for companion animals by experts at a leading vet school.
- ▶ Continuous Monitoring: Monitoring during procedures is simple with user-defined intervals for BP measurement.
- ▶ Portable: Battery-operated device easily moved to different monitoring locations.
- ▶ Rechargeable: Battery recharged when device is plugged into AC power, reducing disposable battery waste.
- ▶ Data transfer to IPAD, PC

## Clinical & Laboratory

PRODUCT LINE

## BCL-200 Vet

Fluorescence Quantitative Analyzer

- ▶ 3 in 1: Veterinary BP technology + pulse oximetry + temperature. Simple to use: Intuitive, color, touch screen interface.
- ▶ Accurate: BP algorithm was specifically developed for companion animals and small animals.
- ▶ Continuous Monitoring: Monitoring during procedures is simple with user-defined intervals for BP measurement.
- ▶ Portable: Battery-operated device easily moved to different monitoring locations.
- ▶ Rechargeable: Battery recharged when device is plugged into AC power, reducing disposable battery waste.
- ▶ Data transfer to IPAD, PC



## Rapid Test Kit

A	Inflammatory products	Canine C-Reactive Protein (cCRP)Kit, 20TEST KITS/BOX	Diagnosis and differential diagnosis of acute infectious diseases; Post-operative infection monitoring; Observation of the effect of antibiotics; Disease monitoring and prognosis.
		Feline Serum Amyloid A (fSAA) Rapid Test Kit, 20TEST KITS/BOX	Serum amyloid A can reach its peak within 4-6 hours after the occurrence of systemic inflammation in the body. After the treatment of the disease, SAA level will significantly drop or return to normal. Continuous detection of SAA can monitor the development of the disease, surgical situation, and efficacy of antibiotics.
B	Reproductive products	Canine Progesterone (cProg)KITS/BOX Rapid Test Kit, 10TEST	Progesterone is the most sensitive clinical indicator for the optimal mating period

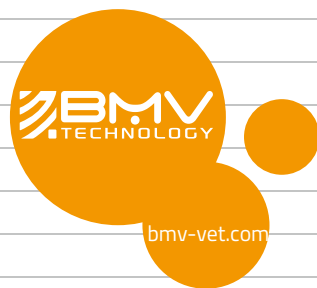


bm-vet.com

## Clinical & Laboratory

PRODUCT LINE

C	Viral infectious diseases products	PET INFECTIOUS DISEASE (ANTIGEN DETECTION) RAPID TEST KIT, 20 TEST KITS/BOX . This Kits come in 5 flavors to suit your needs and petcare departments: CPV, C-CV, FPV, FCV, FHV	The kits are used for rapid quantitative detection of IgG antibody against canine Distemper virus, Parvovirus and feline Distemper virus . Vaccination is one of the effective way to prevent infectious diseases in pets. Vaccination can not only reduce the susceptibility to infectious diseases but also improve the specific resistance of cats and dogs to infectious diseases. Successful immunization not only depends on the quality of vaccination, vaccination route and immunization procedures and other external conditions but also depends on the immune response ability of the body. Regular antibody measurement is important to the pet to maintain a healthy state.			
			CPV			
			CCV			
			CCV+CPV			
			CDV			
			FPV			
			FCV			
			FHV			
			D	More RAPID TEST KIT	10 TEST KITS/BOX	The kits are used for rapid quantitative detection of canine Distemper virus, canine Parvovirus, canine Coronavirus and feline Distemper virus. The kits can be used for epidemiological investigation of pet infectious diseases to provide accurate disease information for the owners and doctors, and to take preventive or therapeutic measures.
						CDV IgG
CPV IgG						
CCV IgG						
FPV IgG						
FCV IgG						
FHV IgG						
cPL						
fPL						
Canine C/Cys C						
Feline C/Cys C						
Canine TT4						
Feline TT4						
Canine TSH						
Canine cSDMA						
Feline fSDMA						



## Clinical & Laboratory

PRODUCT LINE

# Ruminant & Farm Equipment

## In Touch with Veterinary

S6



PT50C Vet



## Ruminant & Farm Equipment

PRODUCT LINE

## Portable Veterinary Ultrasound

The innovative PT50 color Doppler ultrasound dedicated veterinary user interface offers quick and precise Animal Care imaging, diagnostics, storage and printing, thanks to its ease of use and full touch screen control.



PT50C Vet

### Features

- ▶ Easy to clean
- ▶ Full touch screen(15")
- ▶ Dedicated simplified interface
- ▶ 3 probes ports
- ▶ Protection cover
- ▶ Various animal veterinary measurement packages
- ▶ Compact, height-adjustable trolley
- ▶ iBstation for convenient review and image processing

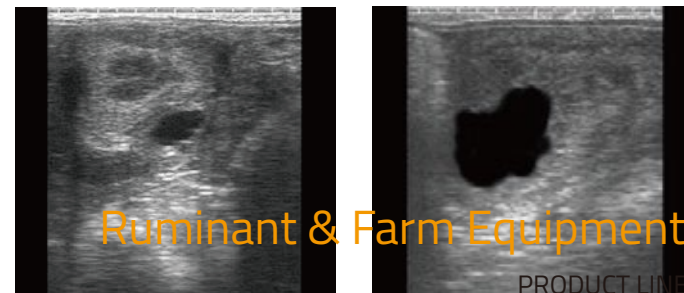


PT60 Vet

## S6

Small size, great imaging

Weighing just 1.2kg, the BestScan® S6 is small in size, but big in functionality and features. The S6 was specifically engineered for all aspects of bovine and equine reproductive imaging, as well as for basic equine tendon imaging.



Ruminant & Farm Equipment

PRODUCT LINE

## BestScan® S6 Touch

compact touch ultrasound system for large animal scanning

Specifically engineered for all aspect of bovine and equine reproductive imaging, as well as for basic equine tendon imaging

- ▶ Excellent image
- ▶ Multiple probes (lower TCO)
- ▶ Internal battery for 4.5+ hours continuous scan
- ▶ Rectal convex probe for a deeper and wider image
- ▶ Probe introducer ease shoulder and arm strain
- ▶ Left/Right hand operation
- ▶ Goggles (optional)

### Support Probes



Bovine Scan Curve



Bovine Scan Linear



Equine Scan Linear



Ovine Scan Convex

### Applications



Bovine beef/dairy



Equine



Sheep - goats



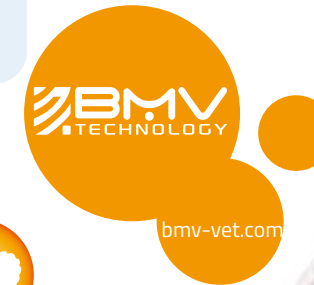
Accurate



Easy



Fast



Ruminant & Farm Equipment

PRODUCT LINE

## S10

### Wireless Color Doppler Ultrasound System



- ▶ IP67 waterproof performance
- ▶ 4K resolution, and best-in-class processing
- ▶ Unmatched B&THI, M and colors Doppler (color Doppler, Power, PW mode) imaging
- ▶ Unbelievable experiences thanks to exceptional performance
- ▶ Modular, Maintenance-free, future-proof platform
- ▶ Power to go, 14 hours working time, wireless charging
- ▶ Broad-bandwidth phased/linear/curved/rectal array transducer (12 to 1 MHz operating frequency range)
- ▶ Special patented BMV's veterinary software
- ▶ Wide range of clinical applications such as: Cardiac, Abdominal, Rectal and more
- ▶ Can be used by vet cardiologists, general vet practitioners & professionals in a wide range of settings such as equine, bovine, small animal hospital;

#### S10 S9 Support probes:

- ▶ 2.0 to 5.0 MHz curved probe
- ▶ 6.5 MHz 60 mm linear rectal probe
- ▶ 3.5 MHz convex T probe for large field of view (pregnancy diagnosis in sows, sheep and goats)



## S9

### Do More | Faster | Focused



S9 is specifically engineered for all aspects of bovine and equine reproductive imaging, as well as for basic equine tendon imaging.

- ▶ IP67 waterproof performance
- ▶ Intelligent HD imaging : 32 channels, 128 elements
- ▶ 12 hours continuous working time, video glasses up to 4 hours.
- ▶ Special patented BMV's veterinary software
- ▶ Fast connection and conversion:
- ▶ Supports (Android, IOS, Windows) tablet, mobile phone, laptop
- ▶ Tablets and TVs can be connected at the same time, connecting faster and more suitable for conversion
- ▶ Special patented BMV's veterinary software
- ▶ Plenty of accessories options: introducer stick, Binocular lenses, smart devices, backpack, belt, wrist straps, portable suitcase, mobile charger, wireless remote control, and air print etc



## Ruminant & Farm Equipment

PRODUCT LINE

## S6 Lite (L80)

### Touch B/W Ultrasound System



- ▶ Net weight 1.2kg. Smart and light.
- ▶ High-capacity lithium Battery, more than 6 hours work.
- ▶ Standard configuration 1 pc of sunshine cover, suitable for use in outdoor strong sunshine.
- ▶ Available for left/right hand alternative use, eliminating operate fatigue.
- ▶ Multiple use method: hand-held, chest hanging, back hanging, waist hanging, etc.
- ▶ Optional professional ultrasound goggle, convenient for outdoor use, meet different need.
- ▶ Sophisticated craft, splash-proof, dust-proof.



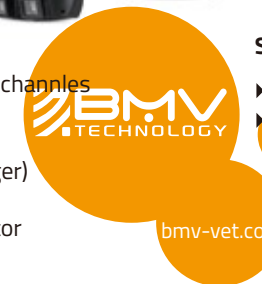
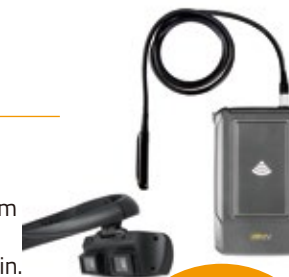
## S8

### Cattle Ultrasound System

S8 is a durable, lightweight, portable, convex probe cattle ultrasound. It is designed to be paired with the ReproArm for rapid pregnancy diagnosis and the alleviation of the shoulder and arm strain.

#### Hardware configuration:

- ▶ Enhanced processor + 128 elements probe + 32 channels
- ▶ Clear high-resolution image
- ▶ 8 hour lithium ion built-in battery
- ▶ Charge from 120/240 VAC or 12 DC (Car Charger)
- ▶ Battery indicator on display
- ▶ Remote controller & Strong LEMO type connector
- ▶ Works with sizes of IFR™ Probe Introducer



## S6

### Touch B/W Ultrasound System



- ▶ Superior image quality
- ▶ Grid for estimation
- ▶ Waterproof designed difficult field condition on a daily basic
- ▶ 7" high resolution, antiglare touchscreen
- ▶ Curved Probe: See more, then do more, with curved probe, you get wide field of view and deeper penetration.
- ▶ Environmental rating: With IP67 protective case; IP67 (probe head), IP45 (main unit)
- ▶ Rotate Screen for left hand layout or right hand using
- ▶ Patent design: Rectal Linear Probe + Works with sizes of IFR™
- ▶ Probe Introducer;
- ▶ Hood sheath: Using hood sheath sunlight readable
- ▶ Storage and Export: Images saved up to 1000 frames, and export via USB/SD supported
- ▶ i-Scan™ ultrasound goggles (optional)
- ▶ IFR™ probe introducers (optional)
- ▶ Built-in 3.5+ hour battery
- ▶ S6 competes most closely with the popular DRAMINSKI iScan, ECM Imago

## S5

### Intelligent Palm Veterinary Ultrasound System



- ▶ Special design, Good image quality and stable connection: Connected with smartphone, tablet PC with connector type C USB )
- ▶ IPX7 designed on animal condition environment, large screen scanning, replaceable cables, high cost effective
- ▶ Good image quality and stable connection: Connected with smartphone, tablet PC of you with connector type C USB )
- ▶ Professional measurement for bovine, equine, fully meeting the clinical needs for bovine, equine-pregnancy testing, fetal sex and age, disease detection, monitoring of follicles testing
- ▶ Unique marketing competence: Innovative design, with technology and fashion sense.

#### Support:

- ▶ 6.5 MHz 60 mm linear rectal probe (5.0 to 9.0 MHz)
- ▶ 3.5 MHz convex T probe for large field of view (pregnancy diagnosis in sows, sheep and goats)

## Ruminant & Farm Equipment

PRODUCT LINE

## S3

### Wireless Veterinary Ultrasound

S3 with good price but stable quality. Its extremely lightness and finish allows for effective use, avoiding the risk of cables with pig, sheep, goats species.

- ▶ Designed for pregnancy diagnosis in sows, sheep and goats.
- ▶ Excellent image for reproduction scan
- ▶ Auto Backfat Measurement
- ▶ Maintenance-free probe
- ▶ Freeze button
- ▶ Splash-resistant probe
- ▶ Waterproof Tablet (optional)
- ▶ Charge anywhere, 220V, 12V, wireless charging
- ▶ Take by hand or by neckbelt

S4 Go together with S3 competes most closely with the popular Sonowin SmartScan, Sono V6+ and Kaixin MSU1 Plus.

## S4

### Wireless Veterinary Ultrasound

- ▶ Designed for pregnancy diagnosis in sows, sheep and goats.
- ▶ Excellent image for reproduction scan
- ▶ Backfat Measure: auto identification, auto measurement, auto saving measurement results and manual adjustment as the compensation
- ▶ High-grade dust-proof waterproof design
- ▶ Comfortable grip design
- ▶ Concealed waterproof charging port
- ▶ Simple interface color touch screen

## S1ai

### Camera Guided AI Gun



## S1 (BF-8)

### Smart back fat Tester System

Measuring animal backfat thickness Pulse ultrasound electronic ear reading function Intelligent analysis USB plug-in is charging Long battery life, Clear button functions Simple, convenient and efficient. Data is saved in real time and archived without worry Fast and accurate measurement, display data directly Bluetooth connection with tablet phone

## S1em

### Estrous & Mastitis Detector



## Ruminant & Farm Equipment

PRODUCT LINE

## L6RL

### Full Digital B/W Ultrasound System

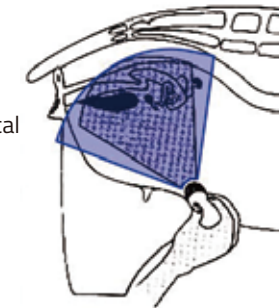
- ▶ Light weight, only 0.6kg;
- ▶ 5.8 inch WVGA LCD and excellent imaging quality and ergonomic design;
- ▶ Versatile and easy use for all veterinary applications on bovine, equine, swine, etc;
- ▶ Li-ion battery with 3 operating hours;
- ▶ Images and videos export via USB 2.0 with 450 frame cine loop inside;
- ▶ Software & Report for reproductive system, and measurement for distance, area, circumference, volume, angle, heart rate, etc.



## L6RC

### Full Digital B/W Ultrasound System

- ▶ Superior Imaging Quality with 96 elements
- ▶ More Wider Scan Angle
- ▶ Longer Life-time
- ▶ No need to do oil-injecting all the time
- ▶ No possibility of the air-bubbles which affect image quality in Some Mechanical Probes
- ▶ More comfortable for animals without motor-motion



## M30

### Full Digital B/W Ultrasound System



## L70

### for Animal Science, Backfat, Muscle Scoring

- ▶ Net weight: 600g
- ▶ 5.8 inch TFT LCD
- ▶ Easy - to - use GUI menu
- ▶ Low power consumption
- ▶ USB 2.0 For real - time picture uploading to PC
- ▶ Full digital beamforming technology
- ▶ Probe automatic identification
- ▶ Gamma correction, Color encode, Image Smoothen



## M50

### Full Digital B/W Ultrasound System

- ▶ 5.8" WVGA LCD monitor, wide viewing angle
- ▶ Resolution: 640\*380
- ▶ Imaging Modes: B, B+B, B+M,
- ▶ Gray scale levels: 256
- ▶ 2.5MHz, 3.5MHz, 5.0MHz, Adjustable (3 point each probe)
- ▶ General B mode: distance, circumference, area, volume, EF rate, heart rate, Time
- ▶ Scanning depth: ≥200mm, multi - steps



## S1sa

### Sperm quality analyzer



## Ruminant & Farm Equipment

PRODUCT LINE

## Ruminant & Farm Equipment Unique Accessories

Bmv's proprietary probe technology and unique accessories that would enable you to provide and expert diagnosis.



### I-Scan® Ultrasound Goggles

I-Scan® is ideal for BMV ultrasound machines. Every veterinarian should own this. You can see the image in bright sunlight or dark situations when I-Scan® is worn on your head and allows you to see the ultra-sound image in front of your eyes.



### System sunshade and protective jacket



### Ultrasound probe holder

Very light weight and smooth probe holder provides easy handling  
Material warms up to body temperature very quickly  
Slim design enables oocyte aspiration in young animals when combined with small probe  
Optimised needle outlet for recommended needles

## Accessories

PRODUCT LINE

## SPECIAL PATENTED

### BMV'S VETERINARY SOFTWARE

**Patient ID/Owner Name:** The patient demographic screen is dedicated to the veterinary environment with fields for the animal's name, species, and breed.

**Application Selection:** The veterinary application software makes it easy to choose from a list of applications before starting the examination. **Measurements and Reports:** complete veterinary measurement packages including abdominal, cardio-vascular, and reproductive gestational calculations provide easy examination documentation.

**Wireless and DICOM Connectivity:** Access to wireless connectivity, easy networking, printing, and communication with external PCs are just one click away.

**Image Quality:** You can rely on excellent image quality to aid fast and accurate diagnosis with BMV's system, with any application or probe. **Wide Range of Dedicated Accessories**

## GOLDEN SERVICE PROMISE

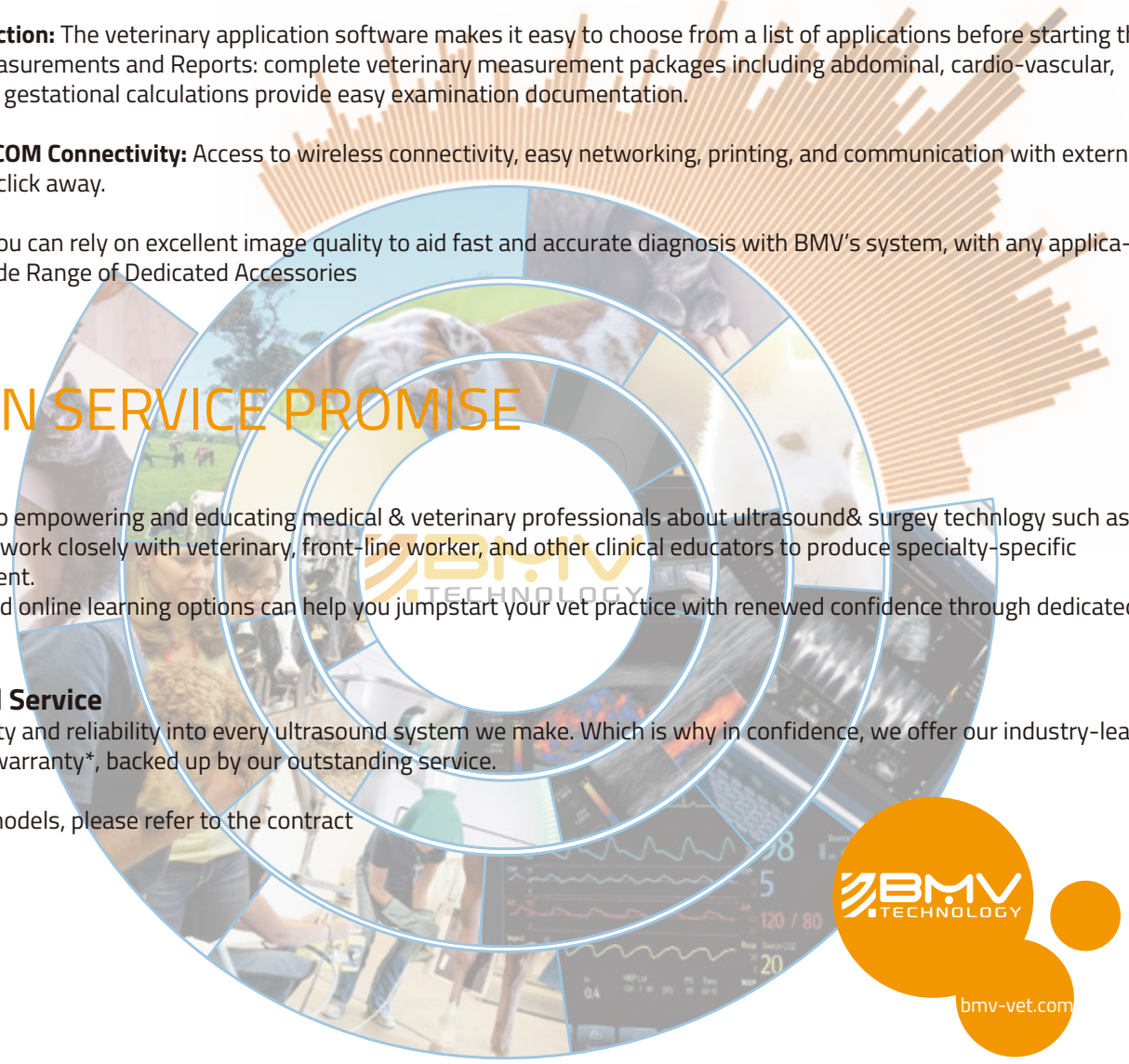
### Education

BMV dedicated to empowering and educating medical & veterinary professionals about ultrasound & surgery technology such as anaesthesia. We work closely with veterinary, front-line worker, and other clinical educators to produce specialty-specific educational content. Our in-person and online learning options can help you jumpstart your vet practice with renewed confidence through dedicated training.

### Warranty And Service

We build durability and reliability into every ultrasound system we make. Which is why in confidence, we offer our industry-leading BMV 5-Year warranty\*, backed up by our outstanding service.

\* For particular models, please refer to the contract



### IFR™ Probe Introducer

Probe Introducer enables fast and accurate diagnosis for an optimized on-farm workflow which allows you to provide animals with increased safety during diagnosis. This leads to enhanced veterinarians confidence and an improved diagnosis experience.



### Robust IPX5 waterproof carrying case



### Professional BPU60/L70 ultrasound scanner for Animal Science, Backfat, Muscle Scoring

Specific designed linear probe 155 mm / 180 mm long to measure back-fat, perimeter and area of loin.  
Standoff for measurement of perimeter and area of loin  
This standoff is necessary for full display of loin eye in a transverse exploration, to perform the perimeter and area measurement.